

## EAU CLAIRE RIVER



A stretch of the Eau Claire River from Weston to Schofield begins at an access point on near Babl Lane and offers paddlers boulder gardens and small rapids. More experienced paddlers can try the upper portion of the river which stretches towards Aniwa. With many maple trees along the river, a fall trip can be especially beautiful.

### ALSO

**BIG EAU PLEINE RESERVOIR:** Southwest of Wausau, this body of water offers great fishing and boating opportunities.



*Steve & Jacki LaCerte*  
**Making Real Estate  
Honest & Simple**

*Serving Central Wisconsin and the Northwoods*  
Relocations, First Time Buyers, Military and More  
715-551-6567 or 715-551-6427  
Lacerteteam@coldwellbankeraction.com



Each office is independently owned and operated

# SUMMER ACTIVITIES

There's plenty of fun to be had outdoors each summer in the Greater Wausau region. Here's a list of a few of the many recreational options:

Archery	Fishing	RC Flying
ATV Riding	Gardening	Running
Baseball/Softball	Geocaching	Shooting
Bird Watching	Golf	Skateboarding
Boating	Hiking	Soccer
Cycling	Horseback Riding	Strawberry Picking
Camping	Hunting	Swimming
Canoeing	Kayaking	Tennis
Dancing	Mini Golf	Volleyball
Disc and Mini Golf	Paintball	Water Skiing
Dog Park Fun	Pickleball	and much more!

**8** SEE MAP  
PAGE 21

## JOJO'S JUNGLE



Children of any ability can play alongside their friends and families at JoJo's Jungle is a unique playground in Wausau. The park is nearly an acre in size and includes areas designed for three different age groups from infant to adolescent. All areas of the park are accessible by wheelchair.





**HARVEY GROUP**  
REALTORS



KAREN: 715-571-0027      BRAD: 715-571-2706

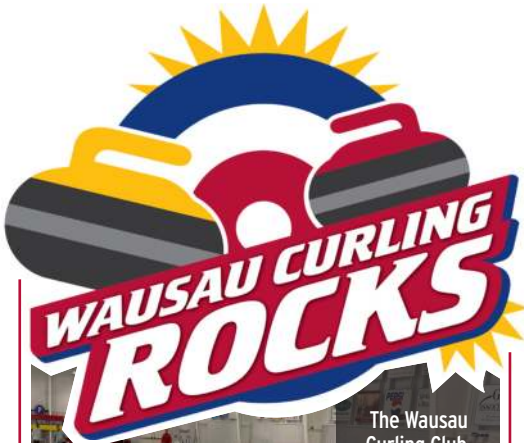


THEHARVEYS@MYHARVEYGROUP.COM



MYHARVEYGROUP.COM

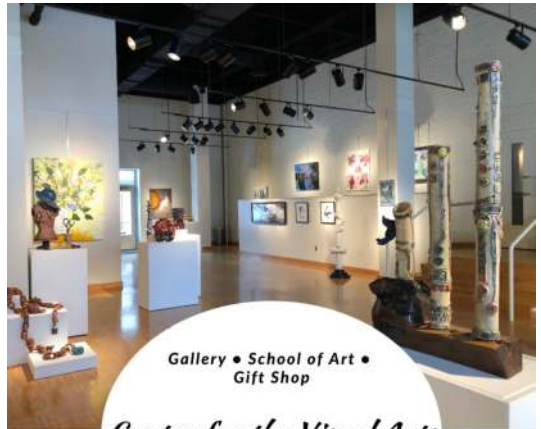
*WE MAKE YOUR NEEDS,  
OUR PRIORITY!*



The Wausau Curling Club, with more than 500 members, was founded in 1920 and now features eight Olympic curling sheets.



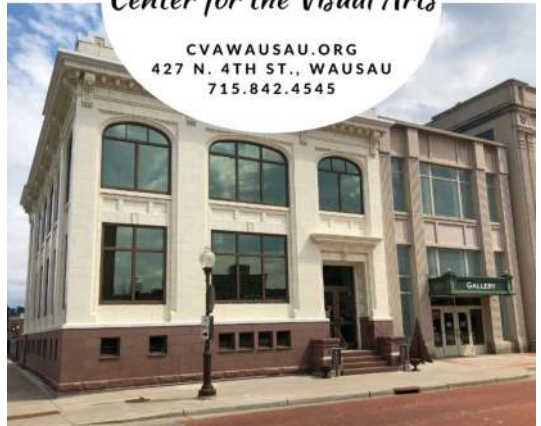
1920 Curling Way, Wausau  
[curlwithus@wausaucurling.org](mailto:curlwithus@wausaucurling.org)



Gallery • School of Art • Gift Shop

*Center for the Visual Arts*

CVAWAUSAU.ORG  
427 N. 4TH ST., WAUSAU  
715.842.4545



9 SEE MAP  
PAGE 21

## WAUSAU COUNTRY CLUB



The Wausau Country Club is a private club which offers tree-lined fairways, views of Lake Wausau and Rib Mountain and a clubhouse with dining rooms, bars and meeting spaces. The Country Club is a historic institution in the area, established in 1899. The course is 6,348 yards and is a par 71 with four sets of tee boxes for all abilities.

10 SEE MAP  
PAGE 21

## GREENWOOD HILLS COUNTRY CLUB



Carved into the rolling hills east of Wausau, Greenwood Hills Country Club offers a distance of 7,017 yards, which plays longer because of all terrain. The Club offers a practice range and short game area for players. Mulligans Lounge offers both casual and formal fare.

### ALSO

**RIB MOUNTAIN GOLF COURSE:** Nine holes at the base of Granite Peak Ski Area.

**TRIBUTE GOLF COURSE:** Wausau's first public golf course, located on the east side.

Visit [GREATERWAUSAU.ORG/EXPLORE/GOLF-COURSES/](http://GREATERWAUSAU.ORG/EXPLORE/GOLF-COURSES/) to find more on golf.



# IRONBULL™

A 501(c)(3) charitable organization that promotes outdoor adventure sports in Central Wisconsin to drive economic development, benefit community organizations and promote healthy living.

## 2021-2022 EVENTS:



**IRONRING RIVER FLOAT** | June 26, 2021



**UNDERDOWN TRAIL RUN & BIKE** | August 21, 2021



**ULTRA TRAIL** | October 2, 2021



**RED GRANITE GRINDER** | October 16, 2021



**RIB MOUNTAIN ADVENTURE CHALLENGE - WINTER EDITION** | January 22, 2022



**RIB MOUNTAIN ADVENTURE CHALLENGE** | May 28, 2022

Sponsored in part by the City of Wausau Room Tax

Follow **IRONBULL** on Facebook or visit [IRONBULL.org](http://IRONBULL.org) for additional free events!

# WINTER ACTIVITIES

There's plenty of fun to be had outdoors each winter in the Greater Wausau region. Here's a list of a few of the many recreational options:

Archery	 <p><i>Photo by Tom Mortenson</i></p>			
Cross-Country Skiing				
Curling				
Dancing				
Dog Park Fun				
Fat Tire Cycling				
Hiking				
Hockey			Running	Tennis
Hunting			Shooting	Tubing
Ice Fishing			Skiing/Snowboarding	Volleyball
Ice Skating	Sledding	and much more!		
Paintball	Snowmobiling			

**11** SEE MAP PAGE 21

## GRANITE PEAK SKI AREA



Granite Peak Ski Area offers 200 acres featuring 58 trails, four terrain parks and many tree skiing options. Skiers will find 700 vertical feet and one of the Midwest's most modern lift systems, including a high speed six-pack and two high-speed quads. Snowmaking at the ski area guarantees nearly six months of winter recreation.